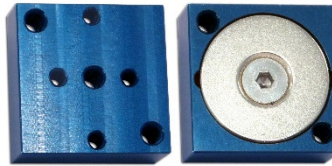


MODEL 2230



MODEL 2232



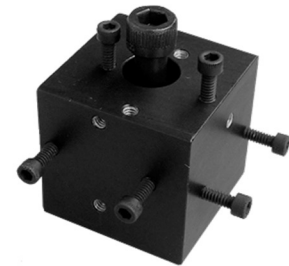
MODEL 2235



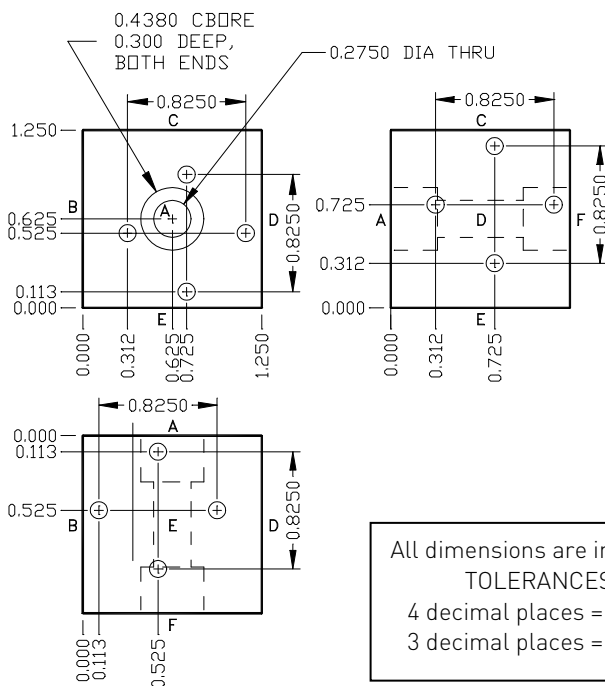
MODEL 2230-BLK

ORTHOGONAL MOUNTING BLOCK

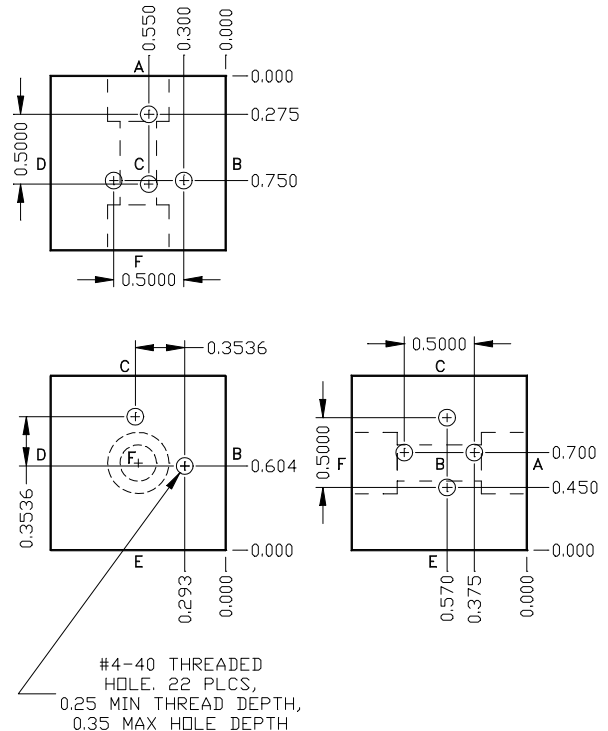
- Mounts up to three SDI single axis accelerometers modules
- Rugged black anodized aluminum
- Block mass = 79 grams
- Included Fasteners:
 - One (1) 1/4-20x1.5" UNC (9.5 grams, 6 lb-ft)
 - One (1) M6x1x35mm (9.0 grams, 5 lb-ft)
 - Six (6) #4-40x1/2" (0.7 grams each, 4.9 in-lbs)



The Model 2230-BLK orthogonal mounting block attaches up to three single axis accelerometer modules to create a user-defined, custom configuration. The 1.25" cube provides a lower cost alternative for achieving a two or three axis accelerometer compared to Silicon Designs' smaller triaxial accelerometer modules. It is precision machined from 6061-T6 aluminum and has a black anodized finish. It will accept any of Silicon Designs single axis accelerometers. The included fasteners are all hex socket head cap screws. The #4-40x1/2" screws are used for attaching your accelerometer(s) to the block. The 1/4-20 or M6x1 screw is used for attaching the block to your work surface.



All dimensions are in inches.
TOLERANCES:
4 decimal places = ±0.005
3 decimal places = ±0.010

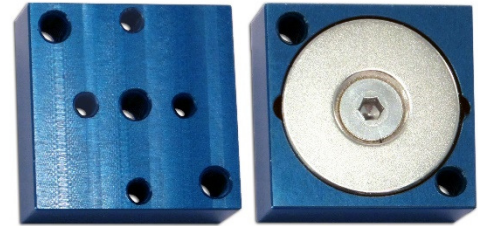


SPECIFICATIONS SUBJECT TO CHANGE WITHOUT NOTICE

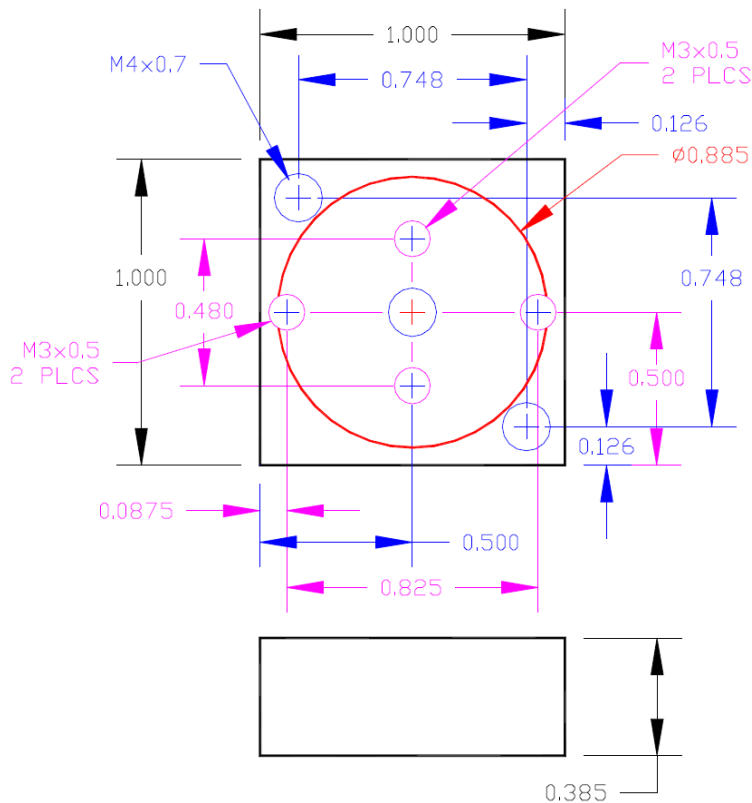
MODEL 2232-BLK

MAGNETIC MOUNTING BLOCK

- Magnetic mount for all SDI accelerometer modules
- 10 lbs / 4.6 KG pull force
- Rated for use up to +/-50G
- Low mass: 23 grams
- Included Fasteners:
 - M3 Metric mounting screw
 - M4 Metric mounting screw



The Model 2232 magnetic mount provides a convenient, temporary mounting for all SDI accelerometer modules onto a flat, ferrous metal surface. The mount has been evaluated for up to +/-50G, and performance is dependent on the quality of the mounting surface. When used with a triaxial SDI accelerometer module, the 2232 mount should only be used with relatively low accelerations in the X or Y direction. The mount is anodized and may damage painted surfaces.



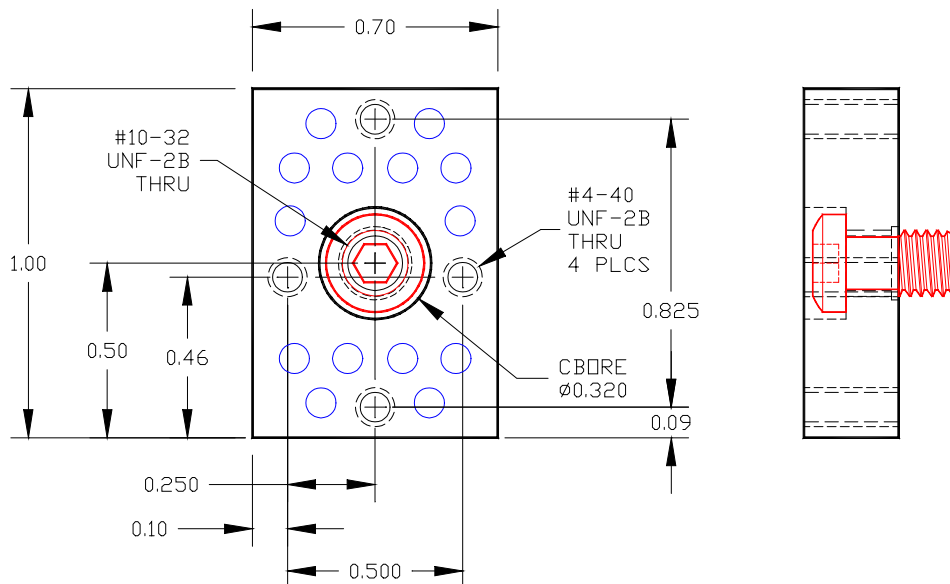
Model 2232 is shown above with an SDI Model 2276 accelerometer and 4PIN-CAB cable. Accelerometer and cable not included.

MODEL 2235-BLK
SINGLE AXIS MOUNTING BLOCK

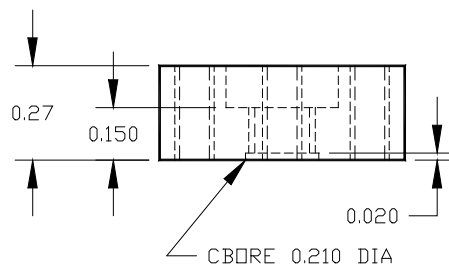
- Mounts one SDI single axis accelerometer module
- Rugged Black Anodized Aluminum
- Size: 0.70 x 1.0 x 0.27 inches
- Block mass = 6.2 grams
- Fasteners Included:
 - One (1) #10-32 captive screw (1.4 grams)
 - Three (3) #4-40x1/2" (0.7 grams each)



The Model 2235-BLK single axis mounting block attaches one single axis SDI accelerometer modules using a stud mount configuration. The small block provides a low-cost mounting solution for applications with mounting options limited to a single screw. It is precision machined from 6061-T6 aluminum and has a black anodized finish. It will accept any of Silicon Designs single axis accelerometers. The included fasteners are all hex socket head cap screws. The #10-32 captive screw is used for attaching the block to your work surface. The #4-40x1/2" screws are used for attaching your accelerometer(s) to the block.



DIMENSIONS ARE IN INCHES
 2 DECIMAL PLACE: ± 0.010 TOLERANCE
 3 DECIMAL PLACE: ± 0.005 TOLERANCE



SPECIFICATIONS SUBJECT TO CHANGE WITHOUT NOTICE